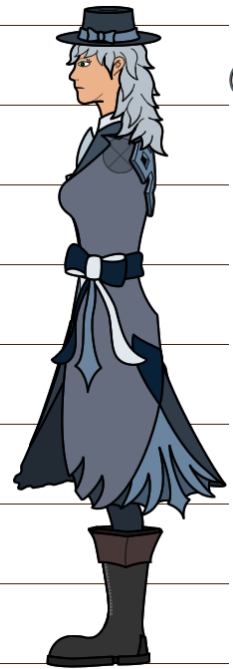
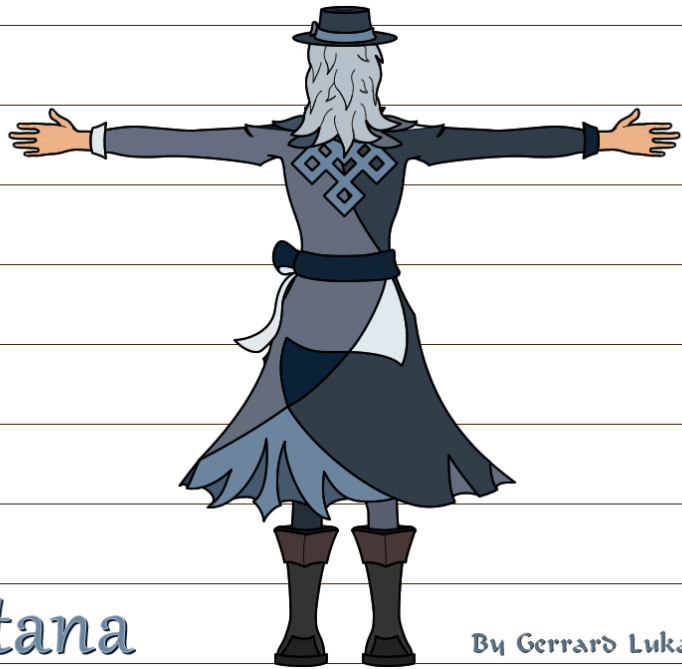
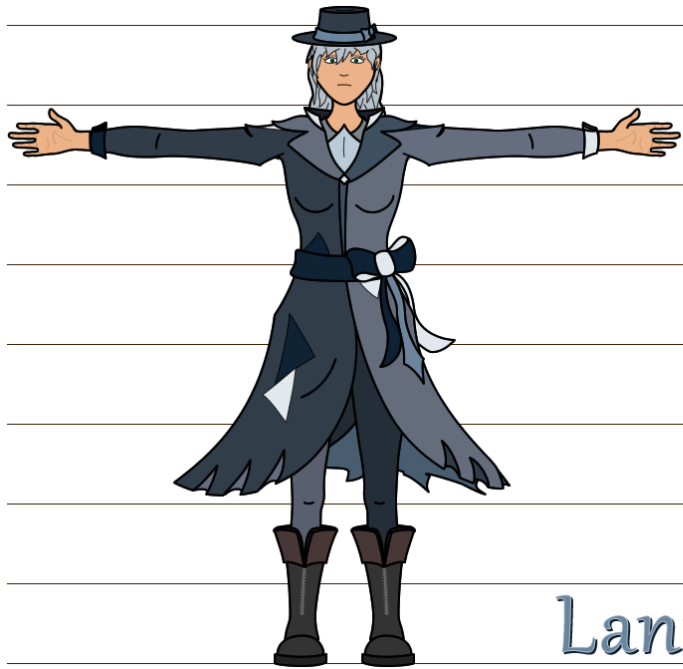


Front



Side





(Original Sketch)

Lantana

By Gerrard Lukacs

“The Lewis Chessmen Queen”



Dimensions: Height: 9.60 centimetres Weight: 156 grammes Width: 5 centimetres
Depth: 3.40 centimetres

The Lewis Chessmen Queen from the National Museums Scotland collection, handmade in the UK. Discovered in 1831 on the Isle of Lewis but dating back to the 12th Century, the Lewis Chessmen recall a time of feuding Viking lords and violent invasions.

Chess-piece; walrus ivory; queen wearing floriated crown over veil, mantle; right hand placed on cheek; seated in chair ornamented on back with adjacent leaf scrolls with animal-heads on top of uprights; chair sides: interlace ornament.

Originally there were 8 Queen peices but now there are only 5 are avaiable at the British Museum.

Falcon Heavy

Launch Date: February 6th, 2018

Destination: Mars

Price: 90 Million Dollars

The Falcon Heavy is by far the most powerful and the 4th most expensive rocket to date. It consists of 3 stages:

In its first stage it uses 3 rockets which have a total of 27 Merlin Engines to generate 22,819 kilonewtons of force at liftoff. This is the most

In its second stage it detaches its 2 side rockets, which return back to Earth to be reused later, and restarts its Falcon 9 rockets.

In its third stage it detaches the 3rd rocket and remains as the Fairing as it approaches Mars.



Falcon 9

Grid Fins

Falcon Heavy

The Silver Swan

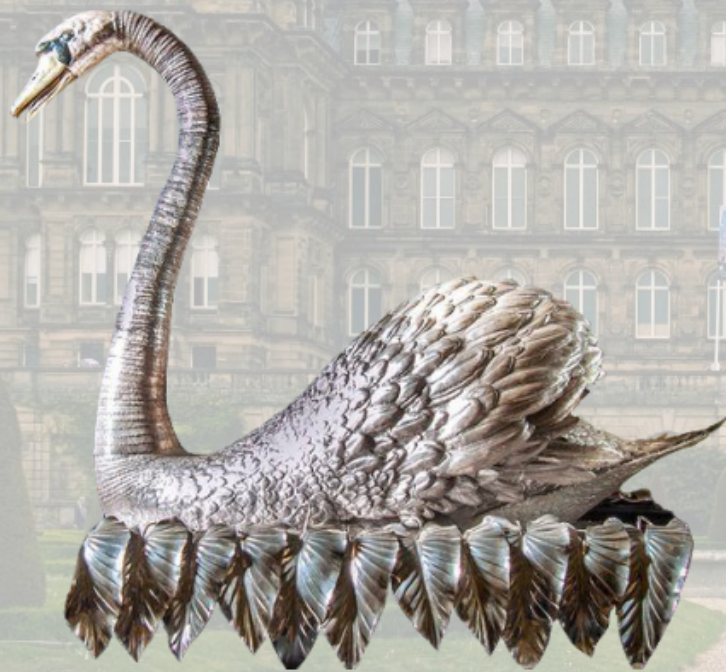
The Silver Swan is an 18th century automaton operated by clockwork mechanisms. The animated sculpture, constructed entirely from silver, rests on a glass platform decorated with silver leaves and miniature silver fish. A music box accompanies the moving metallic structure. The Silver Swan currently resides at the Bowes Museum in County Durham.

Year of creation: 1773

Height: 5.49 m

Width: 0.91 m

Weight: 30 kg





Front



Side



Back

Geography: Dominican Republic,
Caribbean

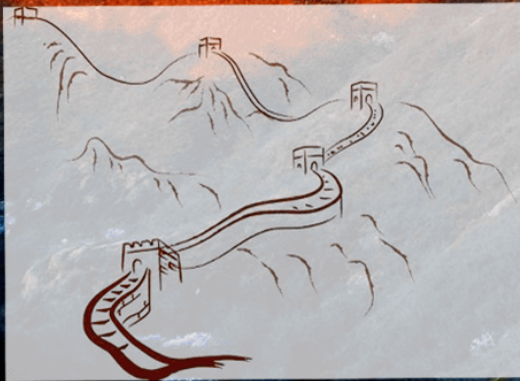
Culture: Taíno

Dimensions: H. 27 x W. 8 5/8 x D. 9
1/8 in. (68.5 x 21.9 x 23.2cm)

This striking figure of a crouched,
emaciated male figure clutching his
knees was called a *zemi* or idol by the
Taino people. *Zemis* were the most
important cult objects in their
society.

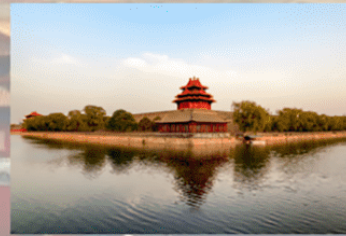
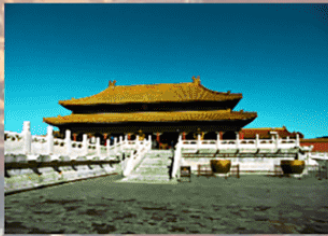
The Great Wall is an ancient defense project with the longest construction time and the largest amount of engineering in China. It has been built for more than 2,000 years since the Western Zhou Dynasty. It is distributed over vast land in northern and central China, the Ming walls measure 8,850 km. This is made up of actual wall, trenches and natural defensive barriers such as hills and rivers. More important, it was connected by beacon towers.

In ancient times, people used to ignite the fireworks on the top of high platform to transmit important news. Those high platforms called beacon tower, which was an important military defense facility in ancient times. It was built to prevent enemy invasion. When enemy was found, smoke was applied during the day, the night was ignited, the beacon tower was connected, and the news was transmitted.

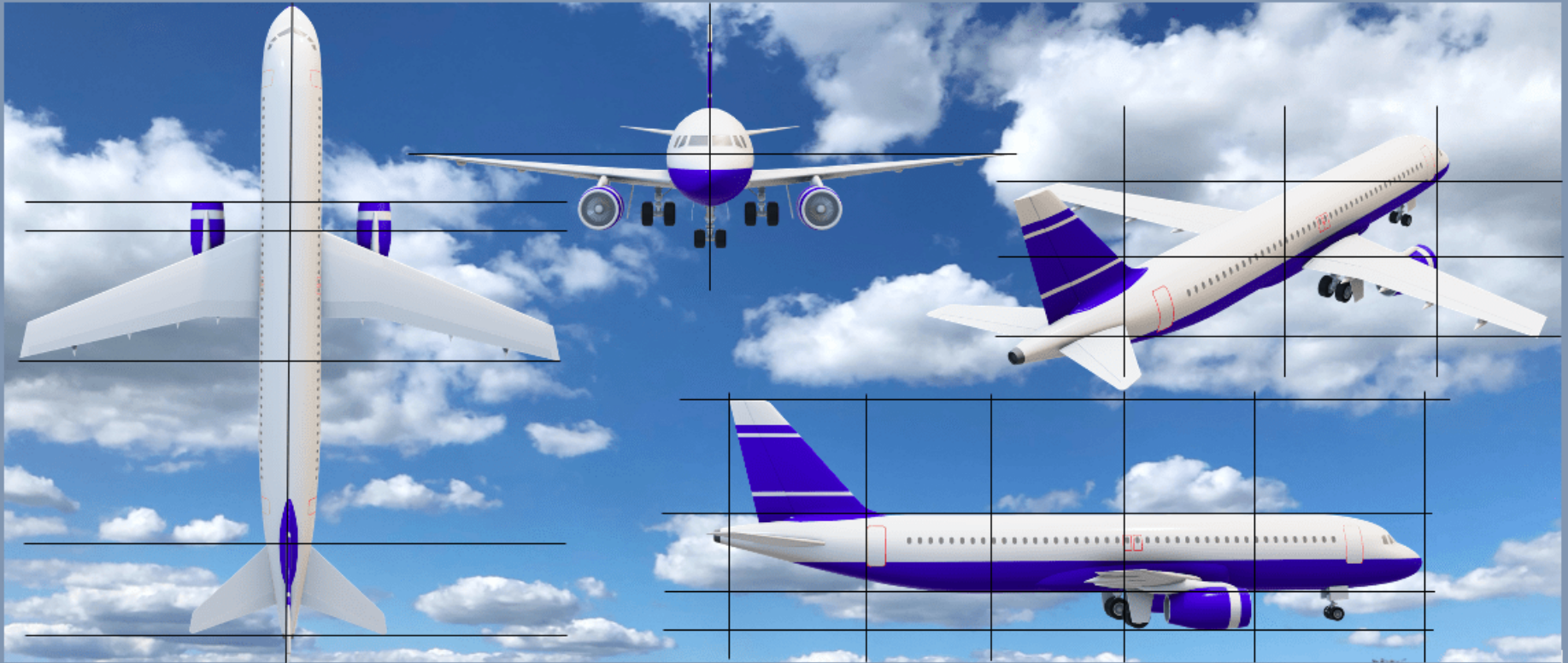


The Palace Museum is also known as the Forbidden City. In ancient China, the planning concept of "the unity of heaven and man" was stressed, and the stars in the sky were used to correspond to the capital planning to highlight the legitimacy of the regime and the supremacy of the imperial power.

The imperial palace in Beijing was built by the Ming emperor Zhu Di and designed by Kuai Xiang (styled tingrui, suzhou, 1397-1481). Covers an area of 720000 square meters, 961 meters long, 753 meters wide), with a construction area of about 150000 square meters, covers an area of 720000 square meters, with 1 million migrant workers, and for 14 years, the house has 9999 rooms and a half, the actual size according to the field measurement of the Forbidden City has 1973 experts compound more than 90 seats, there are 980 houses, a total of 8707 rooms (and the concept of the "room" not today's room, "room" here refers to the space which is formed by the four pillar of room).



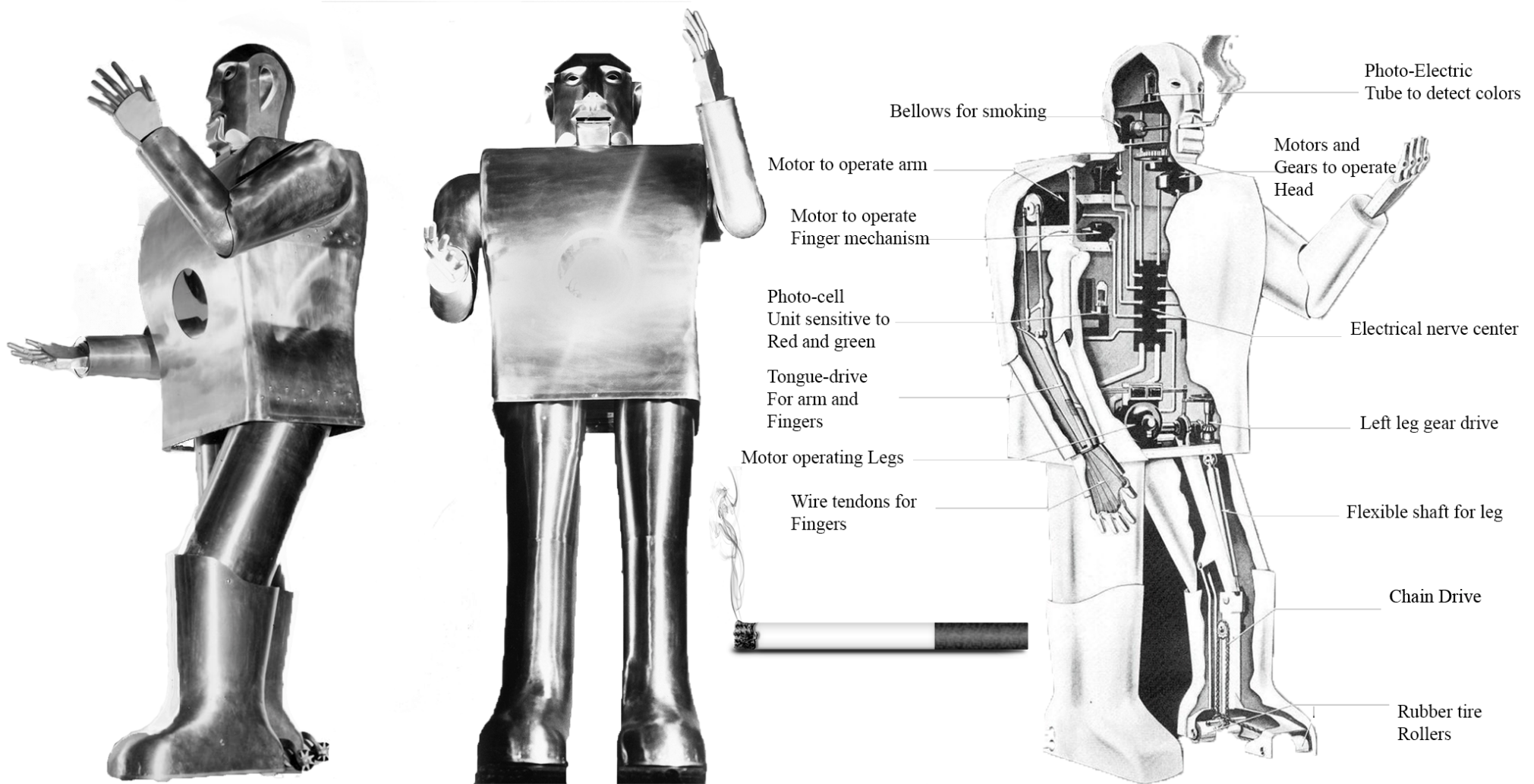
White Pigeon Flight



The background setting is a sunny day in which the White Pigeon Flight soars on the blue sky with the surrounding clouds.

The White Pigeon Flight is a flight that takes the passengers from New York City to Orlando Florida for a trip. It flies very steadily and looks like a white pigeon that enjoys the sky. The wings hold the airplane in the air and are responsible for lifting the plane. It contains 2 turbine engines, which are below the wings, that help it move forward through the air. The horizontal and vertical stabilizers are located at the end of the airplane and they assist the plane to fly straightly and stabilize motions side-to-side and up-and-down. The cockpit located in the front of the airplane is for the pilot to take control and the fuselage, which is the body, puts all the parts together.

The White Pigeon Flight first starts accelerating on the land of the airport, then gradually accelerates to get ready for departure, and flies onto the sky eventually, with steady speed and stable movement.



Elektro the Moto-Man

Height: 7 feet
 Weight: 250 pounds

Between 1937 and 1938, Elektro, a robot, was designed and built by Westinghouse Electric Corporation in Ohio. Elektro is able to do some of the human traits such as blowing up a balloon, move his arms and head, and walk. In addition, he was famous for the ability to smoke speak. Elektro was able to speak about 700 words using a 78-rpm record player that was in his massive chest. Elektro's body was made of steel gears and aluminum sheets.

In 1939, Elektro became widely popular when he made his appearance in the New York World's Fair. Elektro showcased his human-like traits including conversation and hurling mild insults. The crowd were pleased by Elektro's abilities and he continued to enjoy national fame. Today, Elektro lives at the Mansfield Museum in Ohio.